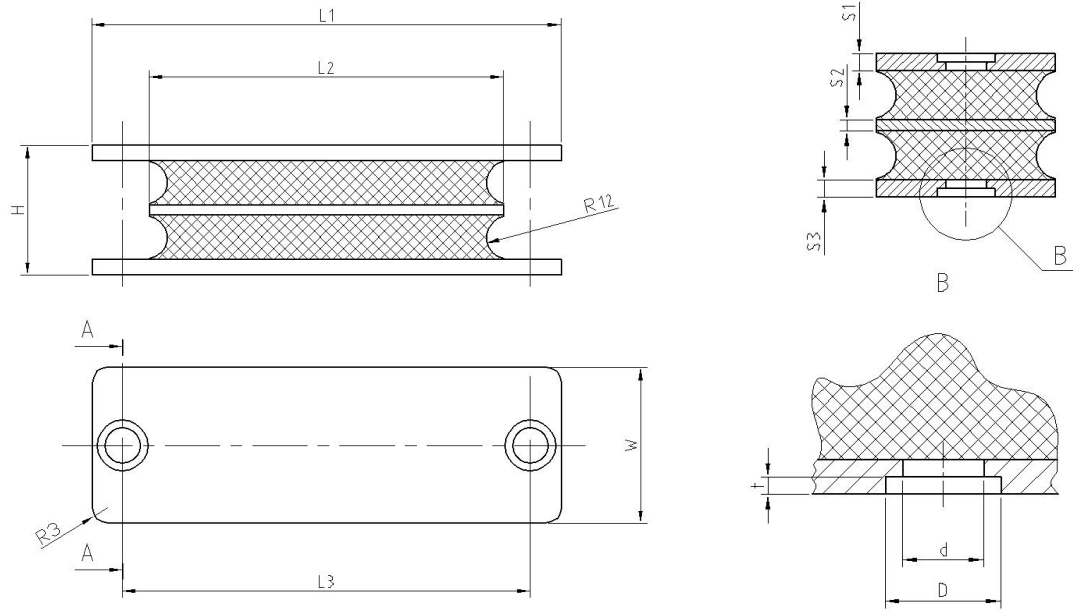
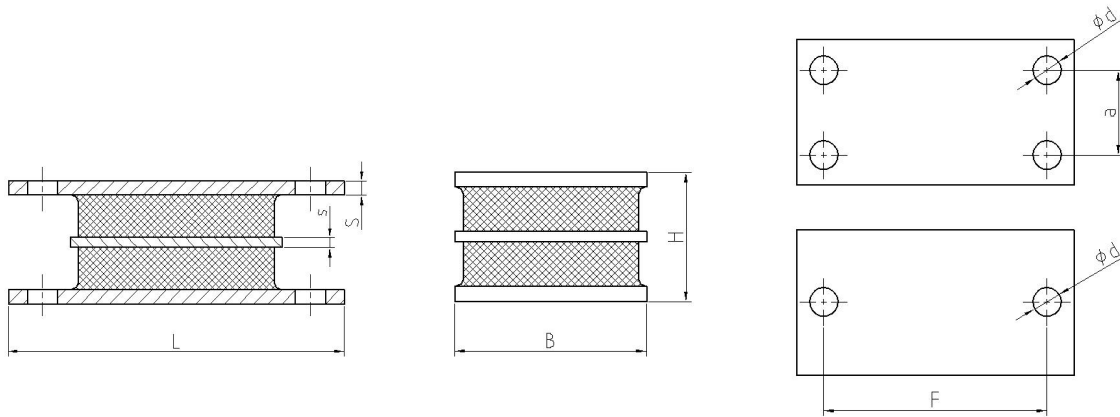


ISOLATEURS SANDWICH - GMR S



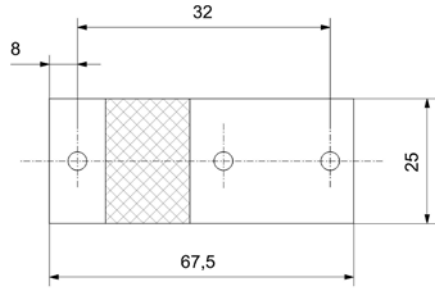
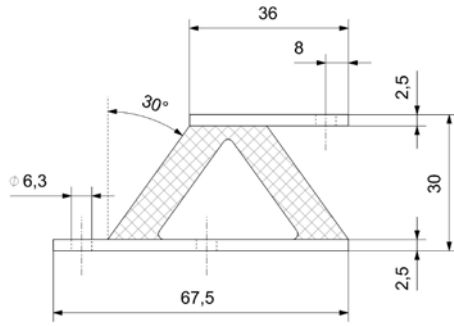
Type	L1	L2	L3	H	D	d	w
GMRS-1	108	63,5	89	43	20	13	57
GMRS-2	168	127	146	43	20	13	57

ISOLATEURS SANDWICH - RMR S

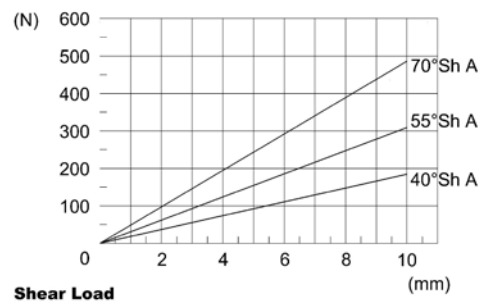
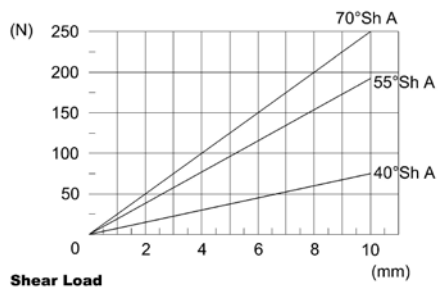
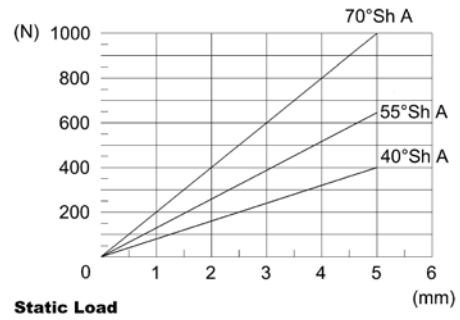
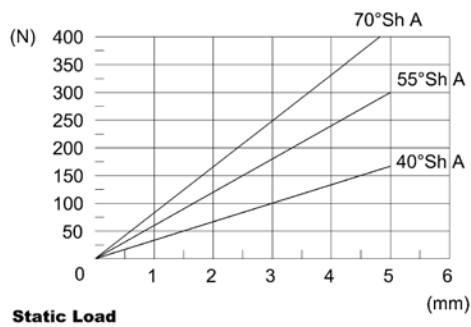
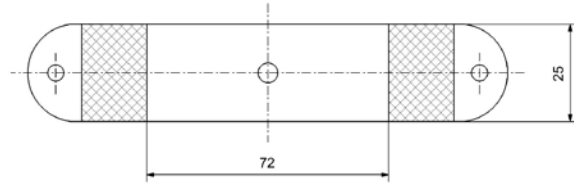
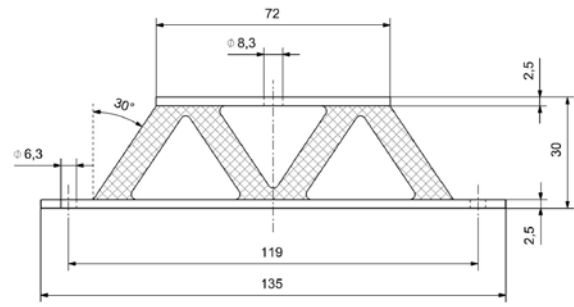


Type	H	B	L	a	F	d	S	S
R-100	43	57	108	-	89	11	5	3
R-600	43	108	251	51	210	13	5	3

V-E



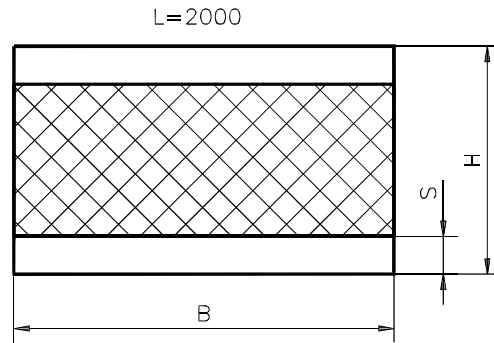
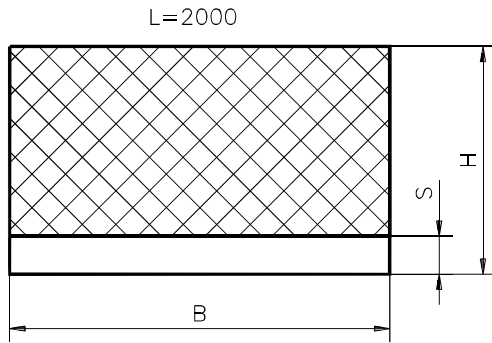
W-E



GS-M1

CAPACITE DE CHARGE ELEVEE

GS-M2



B/H	B	H	s		
			5	10	15
10/30	10	30	○	○	●
20/25	20	25	●	●	○
20/30	20	30	●	○	○
25/25	25	25	●	●	○
25/30	25	30	●	●	○
30/20	30	20	●	●	○
30/30	30	30	●	●	○
35/15	35	15	●	●	○
35/50	35	50	○	●	○
40/20	40	20	●	●	○
40/30	40	30	●	●	○
40/35	40	35	●	●	○
40/40	40	40	●	●	○
40/45	40	45	○	●	○
40/50	40	50	○	●	○
50/10	50	10	●	○	○
50/15	50	15	○	○	●
50/20	50	20	●	●	○
50/25	50	25	●	●	○
50/30	50	30	●	●	○
50/35	50	35	●	●	○
50/40	50	40	●	●	○
50/45	50	45	●	●	○
50/50	50	50	●	●	○
50/55	50	55	○	●	○
50/60	50	60	●	●	●
50/70	50	70	●	●	○
60/20	60	20	●	●	○
60/30	60	30	●	●	○
60/35	60	35	●	●	●
60/40	60	40	●	●	○
60/45	60	45	○	●	○
60/50	60	50	●	●	○
60/55	60	55	●	○	○
60/60	60	60	●	●	●
120/45	120	45	○	●	●
120/50	120	50	○	●	●
120/60	120	60	○	●	●
120/70	120	70	○	●	●
120/80	120	80	○	●	●
150/30	150	30	○	●	○
150/40	150	40	○	○	●
150/50	150	50	○	●	●
150/60	150	60	○	●	●
150/70	150	70	○	●	●

B/H	B	H	s		
			5	10	15
60/70	60	70	●	●	○
60/80	60	80	●	●	○
70/30	70	30	●	●	○
70/40	70	40	●	●	○
70/45	70	45	●	●	○
70/50	70	50	●	●	○
70/60	70	60	●	●	○
70/70	70	70	●	●	○
70/80	70	80	●	●	○
70/55	70	55	○	●	○
70/65	70	60	○	●	○
75/40	75	40	○	●	○
75/55	75	55	○	●	○
80/20	80	20	●	○	○
80/40	80	40	●	●	○
80/45	80	45	●	●	○
80/60	80	60	●	●	○
80/70	80	70	○	●	○
80/80	80	80	●	●	●
90/45	90	45	○	●	●
100/12	100	12	●	○	○
100/20	100	20	●	○	○
100/30	100	30	○	●	○
100/40	100	40	●	●	●
100/45	100	45	○	○	●
100/50	100	50	○	●	●
100*55	100	55	○	●	●
100/60	100	60	○	●	●
100/65	100	65	○	○	●
100/70	100	70	○	●	●
100/75	100	75	○	○	●
100/80	100	80	●	●	●
100/90	100	90	○	●	●
100/100	100	100	○	●	●
110/40	110	40	○	○	●
150/75	150	75	○	○	●
150/80	150	80	○	●	●
150/90	150	90	○	●	●
150/100	150	100	○	●	●
200/30	200	30	○	●	○
200/60	200	60	○	●	●
200/70	200	70	○	○	●
200/80	200	80	○	●	○
200/100	200	100	○	●	○

CHARGE / LOAD DATA**GS-M2**

B	H	L	s	f [mm]	Fv [daN]		
					43Sh	57Sh	68Sh
25	25	2000	5	0,75	16	35	74
				1,5	34	72	154
				2,25	53	113	241
25	30	200	5	1	14	30	66
				2	28	63	136
				3	44	98	212
30	30	2000	5	1	22	47	101
				2	45	98	210
				3	71	153	328
40	20	2000	5	0,5	109	207	415
				1	234	441	885
				1,5	378	710	1 421
50	40	2000	5	1,5	64	138	295
				3	134	287	614
				4,5	312	451	962
50	50	2000	5	2	54	121	262
				4	113	250	543
				6	177	390	846
60	30	2000	10	0,5	479	867	1 705
				1	1 032	1 866	3 665
				1,5	1 677	3 027	5 940
60	60	2000	10	2	86	188	405
				4	180	390	840
				6	283	612	1 315
60	80	2000	10	3	72	163	356
				6	148	336	735
				9	230	520	1 140
70	30	2000	10	0,5	857	1 536	3 005
				1	1 850	3 313	6 470
				1,5	3 015	5 390	10 510
70	50	2000	10	1,5	168	345	717
				3	355	720	1 510
				4,5	565	1 145	2 385

B	H	L	s	f [mm]	Fv [daN]		
					43Sh	57Sh	68Sh
70	60	2000	10	2	130	278	592
				4	273	580	1 235
				6	430	912	1 938
80	45	2000	10	1,25	318	619	1 265
				2,5	678	1 315	2 680
				3,75	1 090	2 105	4 280
80	60	2000	10	2	190	400	838
				4	400	830	1 750
				6	630	1 310	2 760
80	80	2000	10	3	143	317	685
				6	298	628	1 420
				9	468	1 027	2 220
100	60	2000	10	2	368	745	1 550
				4	780	1 570	3 262
				6	1 245	2 500	5 170
100	80	2000	10	3	256	550	1 180
				6	536	1 150	2 455
				9	845	1 800	3 845
120	45	2000	15	0,75	3 215	5 725	11 140
				1,5	6 950	12 360	24 040
				2,25	11 335	20 120	39 110
120	60	2000	15	1,5	985	1 860	3 735
				3	2 110	3 970	7 962
				4,5	3 405	6 380	12 790
120	80	2000	15	2,5	507	1 033	2 156
				5	1 075	2 175	4 535
				7,5	1 710	3 450	7 175
150	60	2000	15	1,5	2 190	4 035	8 005
				3	4 710	8 655	17 150
				4,5	7 640	14 000	27 700
200	100	2000	15	3,5	1 720	3 400	7 020
				7	3 655	7 210	14 825
				10,5	5 855	11 500	23 590